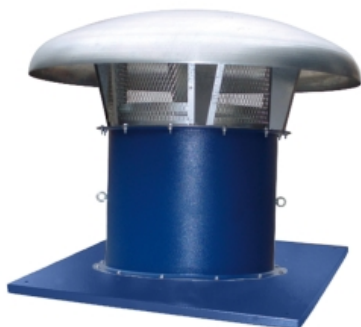


KIT TM + HM 63 T6 0,55kW (A2:6) 35° (KTM63+26165462635P)

GENERAL DATA



AXIAL WITH METALIC COWL

MANUFACTURING FEATURES:

- Roof cowl made of galvanizez steel.
- Roof base support and bird protection guard with polyester powder coat finishing.
- Assembled on HM fans.(tubular)
- Variable pitch angle Polypropylene impeller (A2 profile) or polyamide impeller reinforced with fibreglass (other profiles).
- Squirrel cage asynchronous standard motor, IP-55 protection and rated class F insulation. Standard voltages 230V 50Hz for single phase motors, 230/400V 50Hz and for three phase motors up to 4kW and 400/690V 50Hz for higher powers.

APPLICATIONS:

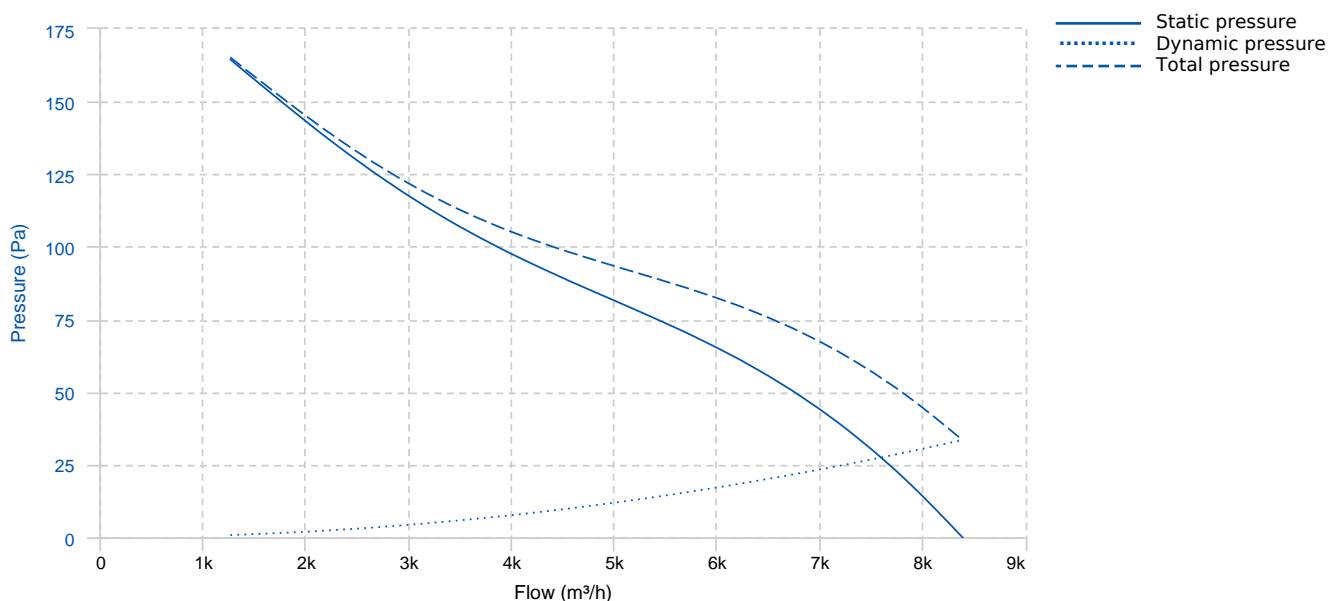
Specially designed for roof installation, they are suitable for:

- Air renewal in buildings and industries.
- Smoke extraction.
- Maximum working temperature: 1ph 50°C, 3ph 60°C.

AVAILABLE ON REQUEST

- B form impeller (air flow from impeller to motor)
- Reversible impeller 100%
- Cast aluminium impellers.
- 60Hz fans and special voltages.
- 2 speed motors.
- Hot dip galvanised and stainless steel housings.
- Reinforced fibreglass sheet cowl.

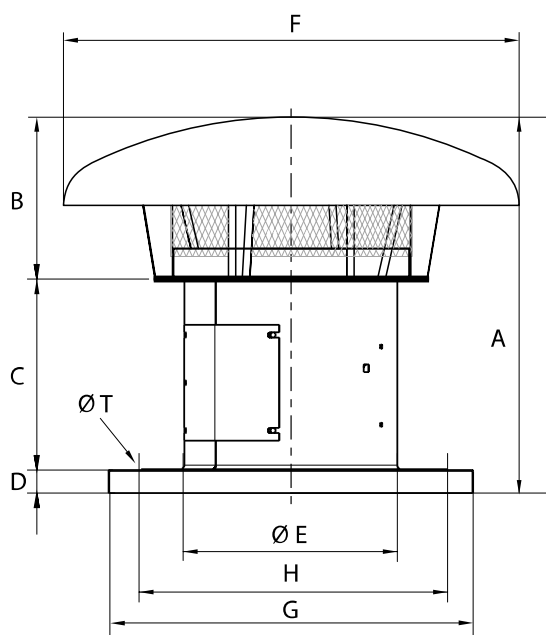
PERFORMANCE CURVE



TECHNICAL DATA

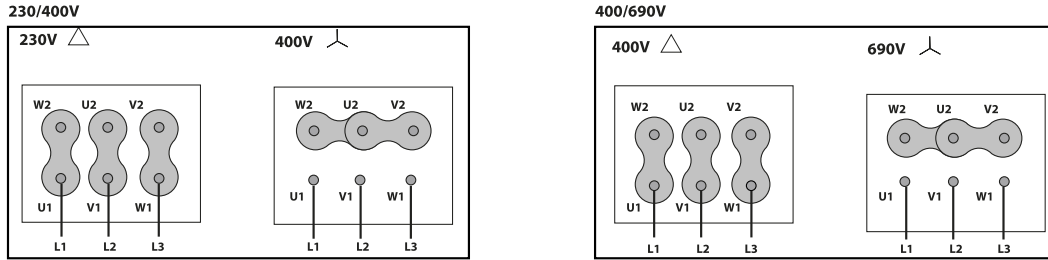
| Fan | | | | | | | |
|-------|---------|----------------|--------|----------------|------------------------|---------------|-------|
| RPM | 900 | Approx. weight | 53 kg | Max. Flow | 8390 m ³ /h | | |
| Motor | | | | | | | |
| Power | 0,55 kW | RPM | 900 | I max. (230V) | 3 A | I max. (400V) | 1,8 A |
| Size | 80 | Approx. weight | 9.9 kg | Efficiency (%) | 71 % | FP | 0.64 |

DIMENSIONS



| Dimensions (mm) | | | | | | | | | |
|-----------------|------|---|-----|---|-----|---|----|---|-----|
| A | 988 | B | 388 | C | 550 | D | 50 | E | 633 |
| F | 1100 | G | 905 | H | 750 | T | 14 | | |

WIRING DIAGRAM



ACCESSORIES